

Axis Rib

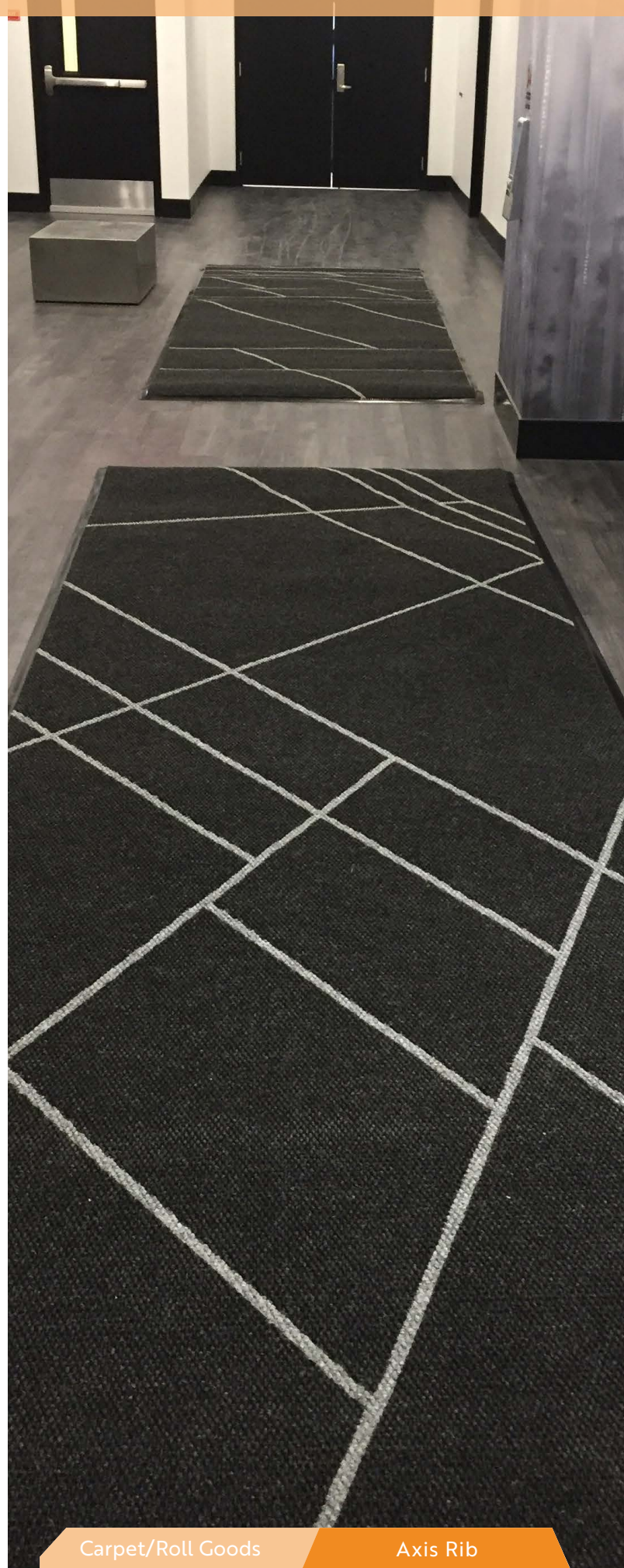
Classic style with legendary resilience and performance

Classic style with legendary resilience, the stain and crush-resistant Axis Rib offers the performance needed for high-traffic areas. Axis Rib's heavy fiber, dense 44 oz. material provides long-term comfort. Its solution-dyed, UV stabilized ASOTA® polypropylene fiber and one-by-one corduroy pattern make it resilient in extreme climate conditions, and easily cut into any shape without edge ravel.

- Dense 44 oz. material provides long-term comfort
- Provides an unparalleled premium
- Resilient in extreme climate conditions
- Easily cut into any shape without edge ravel



01. Sterling 2344 02. Charcoal 1198 03. Beige 1153 04. Harvest 1244 05. Black Shadow 2343



portico
SYSTEMS

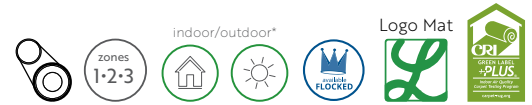
Solutions that Simplify.

1+ 877 285 8899 · www.porticosystems.com

Carpet/Roll Goods

Axis Rib

Axis Rib



> 44 OZ CORDUROY RIB NEEDLEPUNCHED CARPET

SUGGESTED USES

Lobbies, Libraries, Retail/Department Stores, Entryways and other high-traffic areas or spaces where people stand for extended periods of time.

Manufacturing Process:	Non-woven/needlepunched
Surface Aspect:	Corduroy pattern
Fiber:	100% Solution-dyed UV stabilized ASOTA® polypropylene
Backing:	Premium Composite Rubber
Pile Height (± 0.5mm):	0.18"
Total Height (± 7.5%):	0.47"
Pile Weight (± 7.5%):	44 oz/sy
Total Weight (± 7.5%):	65 oz/sy
Sheet/Roll Width (± 2%):	6' 7" or 13' 2"

LIMITED WARRANTY

Full Commercial Warranty 5 years

Summary of Warranty

Products must be professionally installed to validate the warranty.

Portico Systems warrants Axis Rib Sheet/Roll Goods against wear for a period of 5 years in a commercial application. This warranty applies only to material that is properly installed and maintained, while being used as intended and recommended. If the defect is covered by this warranty and is reported to Portico Systems within the Warranty period, Portico Systems will supply new material of same or similar grade to repair or replace the defective material.

- **Wear**
Defined as complete removal of wear layer, pattern and color due to wear from normal traffic and maintenance. If the wear occurs within 5 years from date of purchase, Portico Systems will provide replacement materials or repair, of only the effected area.
- **Manufacturing Defects**
Portico Systems warrants Axis Rib materials are free from manufacturing defects and will replace defective floor covering and reasonable installation costs for a period of up to one [1] year from date of purchase. Portico Systems will not pay labor costs to repair or replace materials that defects were apparent before or at the time of installation.
- **Other Limitations**
 - This warranty is non-transferable
 - Manufacturing defect must be reported within 3 months from date of purchase.
 - This Warranty covers only properly installed & maintained floors
 - Portico Systems excluded and will not pay for any consequential or incidental expenses.
 - Portico Systems reserves the right of final judgment and may refuse claims in certain instances.

*For a copy of the full warranty please ask for a warranty sheet

PACKING & DIMENSIONS

Sheet/Roll Width (± 2%): 6' 7" or 13' 2"

TECHNICAL SPECIFICATIONS

Dimensional Stability (ASTM D7570-09):	Pass
Electrostatic Propensity (EN 1815):	>2kV
Electrical Resistivity (IBM / ICL):	Pass, for R.H. ≥40%
Sound Insulation (ISO 10140-1:2010):	≥21dB
Thermal Retention (ISO 11092):	0.15 m K/W Pass

COLOR FASTNESS

To Light (ISO 105 B02):	5
To Water (ISO 105 E01):	5
To Shampoo (ISO 105 C06):	4-5
To Rubbing (ISO 105 X12):	4 (Dry), 3-4 (Wet)

FLAMMABILITY RATING

Smoke Density (ASTM E662)	Pass
Surface Flammability (FF 1-70 / ASTM D2859)	Pass

LEED-NC

MR Credit 4 | IEQ Credits 4.1, 4.3, 5

MAINTENANCE

Regular vacuuming (Weekly in low-traffic areas, and daily or twice daily in areas with higher traffic) with a motor-driven brush and beater bar can remove up to 80% of surface dirt, and is the easiest way to prolong the life of your carpet.

Regular vacuuming is key to maintaining your carpet, but eventually the carpet color dulls from dirt and grime stuck in the fibers. The dirt is then carried further into the building to form more soil reservoirs. Additionally, the oil content (15%) of the soil causes particles to stick to carpet fiber and resist vacuuming. To restore the carpet to its best condition, frequent light cleaning gives the best result and is often very cost effective.

*For more information, plus instructions for stain removal, consult Portico Systems Resource Center at www.porticosystems.com/resources

IMPORTANT NOTICE

Sample swatches have been cut from an overall design; decoration and shade may vary.

YOUR AUTHORIZED SALES REPRESENTATIVE:



experience it for yourself
Talk with your sales representative or request samples at samples@porticosystems.com

Solutions that Simplify.

1+ 877 285 8899 • www.porticosystems.com