

CL301 TECHNICAL DATA SHEET

CLAIRE FAST KILL RESIDUAL ROACH & ANT KILLER



PRODUCT USES

- Pressurized crack & crevice insecticide
- Indoor & outdoor use

Pressurized Crack & Crevice Insecticide. Kills Carpenter Ants, Carpenter Bees, Centipedes, House Flies, Cockroaches, Crickets, Earwigs, Fleas Stored Product Pests, Silverfish, Sowbugs, Scorpions, Spiders, Termites**, Ticks Wood Infesting Borers and Beetles and Wood Wasps.

AREAS OF USE

Pressurized crack & crevice insecticide for use in and around the home and food and non-food areas of food manufacturing & warehousing establishments and utilities. Use in Schools, Warehouses, Apartment Buildings, Cabins, Kennels, Theaters, Hospitals, Hotels, Motels, Meat Packing and Food Processing Plants, Nursing Homes, Recreational Vehicles, Restaurants, Supermarkets, Food Service Establishments, Tents, Transportation Equipment (Truck Trailers, Railroad Cars, Buses, Boats, Ships, Trains).

**The purpose of such applications of Claire Fast Kill Residual Roach & Ant Killer for termites is to kill workers or winged reproductive forms, which may be present in treated channels at the time of treatment. Such applications are not a substitute for mechanical alteration, soil treatment or foundation treatment but are merely a supplement. This product is not recommended as sole protection against termites. For active infestations, get a professional inspection.

SPECS:

Can Size: 20 oz.
Net Weight: 15 oz.
Shipping Weight: 16 lbs.
Packaged: 12 cans per case
UPC Number: 7 13014 11301 6
GTIN Number: 10713014063011
Material Number: 1000012026
Product Number: CL301
Extender Tube: Y

REGULATORY:

EPA Reg. No. 706-108
Recyclable Package: Yes
VOC Compliant CARB: Yes
VOC Compliant OTC: Yes

PHYSICAL CHARACTERISTICS:

Appearance: Clear, colorless
Fragrance: Mild solvent odor
Shelf Life: 1 year +

See label side panel for First Aid and additional Precautionary Statements

24 HOUR MEDICAL EMERGENCY NUMBER:

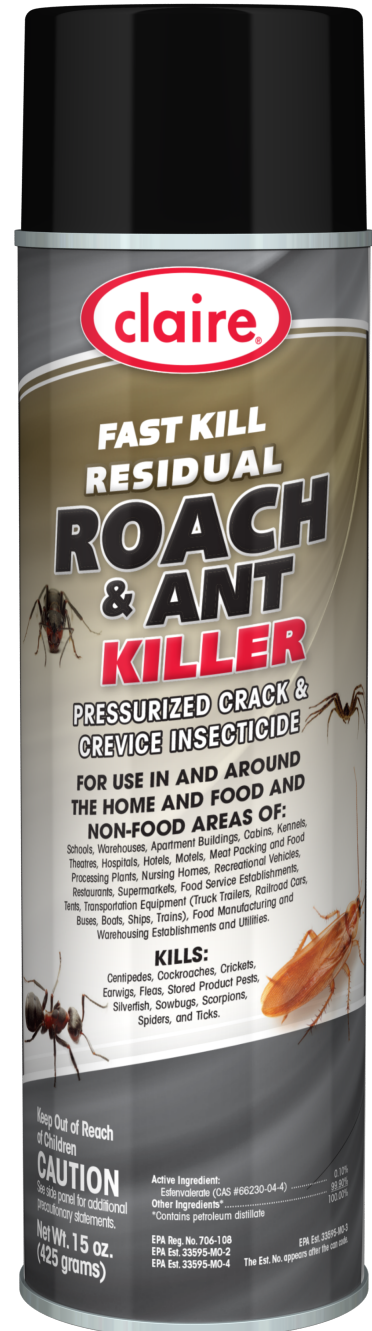
1-866-836-8855

**KEEP OUT OF REACH OF CHILDREN
CONSULT SDS BEFORE USING**

MADE IN THE
USA
WITH GLOBALLY
SOURCED
MATERIALS



PLEASE RECYCLE
WHEN EMPTY



PLZ Corp d/b/a Claire Manufacturing Company
1000 Ingram Drive | Pacific, MO 63069
800-252-4731 | www.clairemfg.com